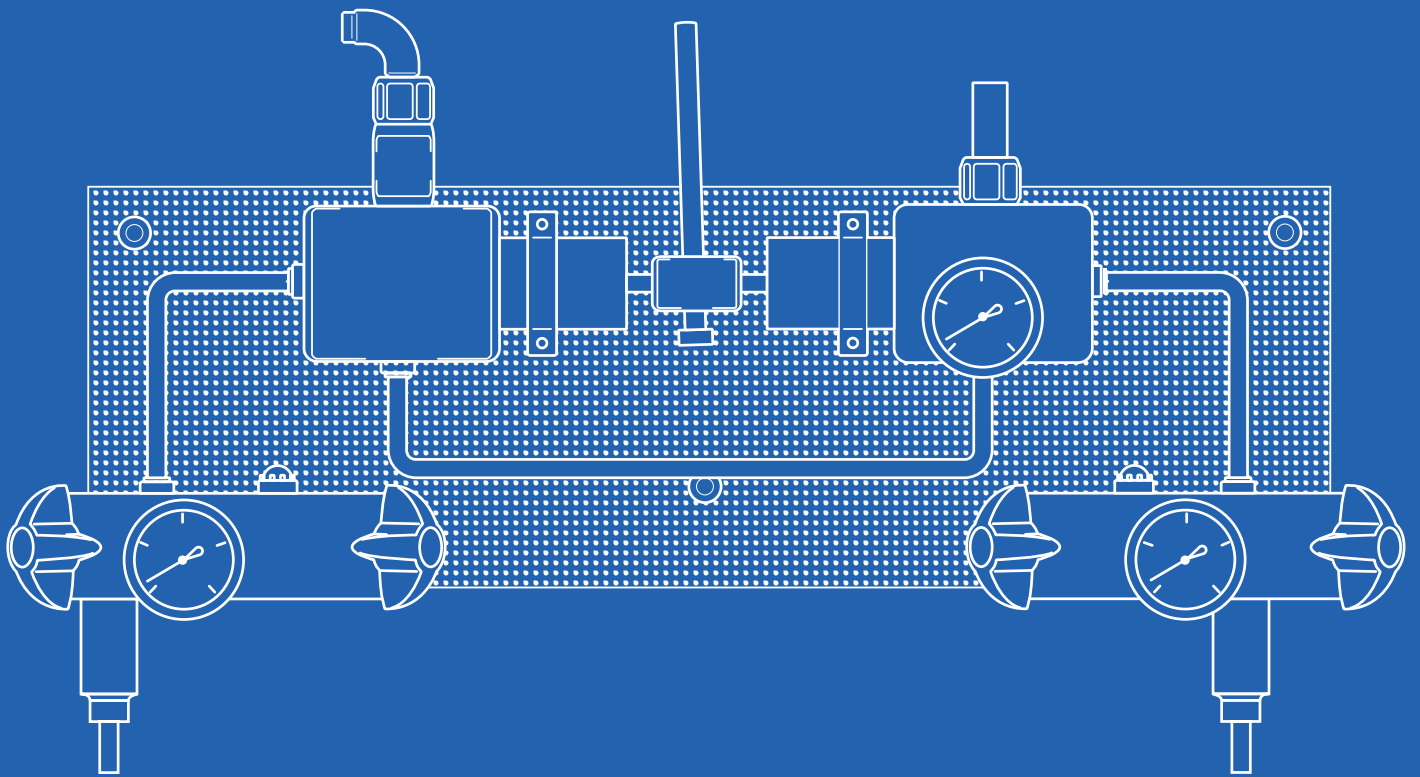


Gas

Reticulation System



Air Liquide TECHNOLOGY

Air Liquide designs and manufactures many of the equipment components of **FLOSAFE™**. Being manufactured by Air Liquide means this system is supported by a world leader for parts, service and reliability. These parts and more are all inclusive in the **FLOSAFE™** monthly service fee.

Industrial ECOGAZ control board

The Air Liquide **ECOGAZ** control board is designed and manufactured by Air Liquide and is utilised throughout the world in our industrial, food and medical customer applications.

Inline smoothing regulator

Air Liquide provides and installs an inline pressure regulator (smoothing) which enables the smooth delivery of gas pressure at a constant flow to the end user. The smoothing regulator also enables users to adjust the reticulation outlet pressure for seasonal temperature changes so the end user receives optimal gas pressure and flow.

Pressure rated pipe reticulation

Air Liquide will utilise a variety of pipe work dependant on the application and environment.

Outlet design to suit your needs

We can supply outlets to suit your need, whether you require different flow settings at each outlets or not.

24/7 monitoring service

Our **TELEFLO** system which is an Air Liquide innovation provides for monitoring of your gas stocks 24 hours a day, 365 days a year. The **TELEFLO** system will regularly monitor gas supply and issue alarms providing peace of mind that Air Liquide is managing your gas requirements.

What is FLOSAFE™?

Increased efficiency

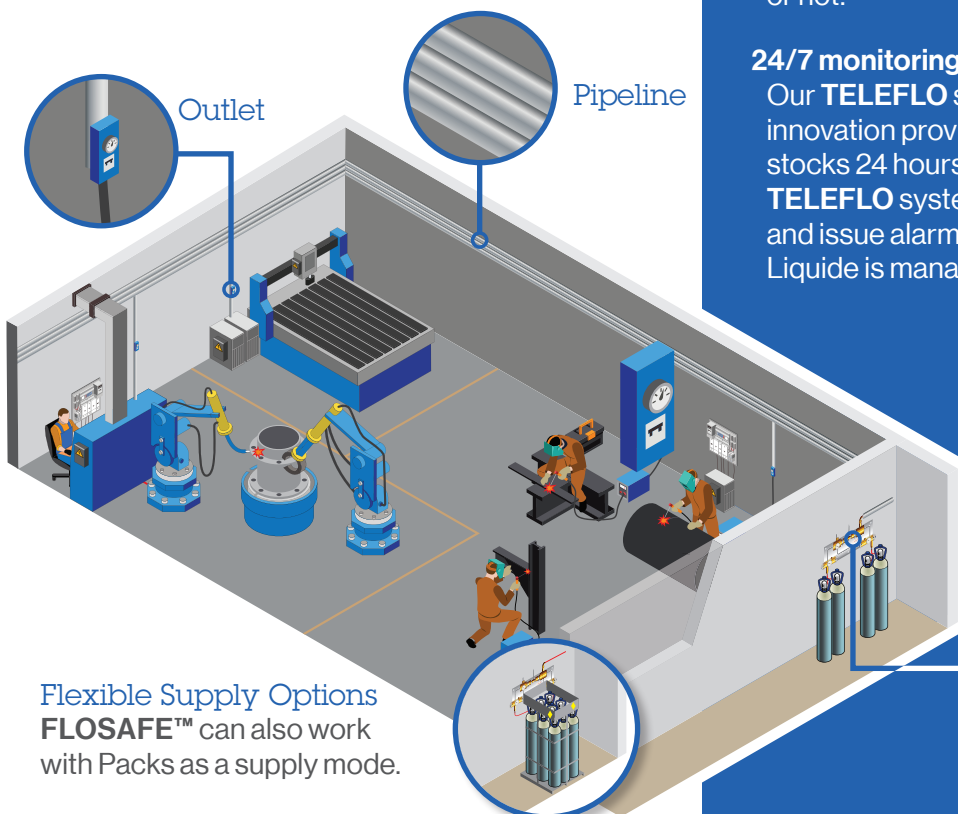
A cost effective gas reticulation solution designed to assist in reducing overall expenses for cylinder management.

Range flexibility

Is available for a comprehensive range of gas types including all inert gas mixtures, oxidising and fuel gases.

Optimise workflow

Allows you to have gas supplied to the point of use without any cylinder handling. It also optimises your cylinder stock holdings and improves safety within the work environment.



Flexible Supply Options
FLOSAFE™ can also work with Packs as a supply mode.



Manifold

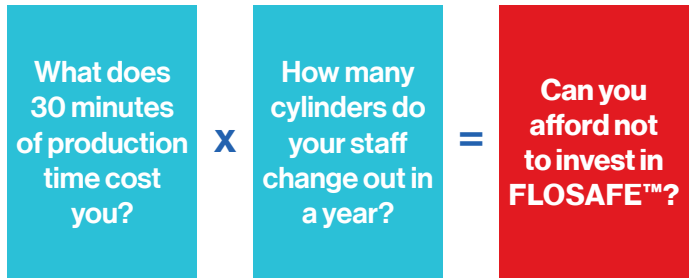
Efficiency and Safety

What is the REAL COST?

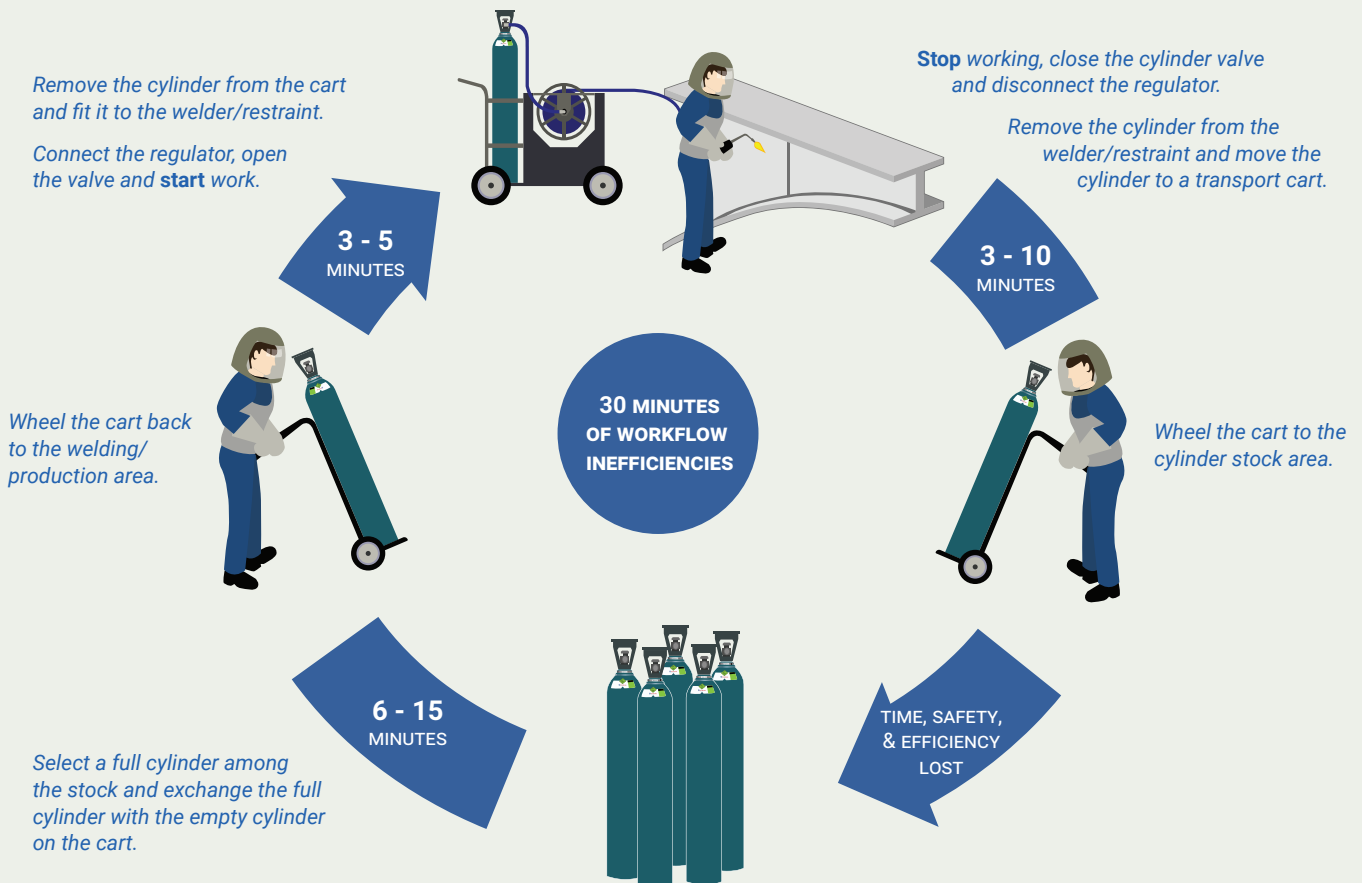
The **FLOSAFE™** gas reticulation system can increase **efficiency** and improve **safety** through reducing cylinder handling.

Areas of focus for modern industry
Reducing waste, increasing productivity and improving safety are at the core of today's industry.

Single cylinder management
Whether in food production, metal fabrication, winemaking, or other industries the process of handling cylinders has a similar workflow which could rapidly represent a significant amount of down time.



Typical workflow for changing over a cylinder



ANZ - December 2018 - FLOSAFE is an Air Liquide trademark.

Contact us

Air Liquide Australia
Level 9, 380 St Kilda Road
Melbourne, VIC 3004
www.airliquide.com.au

Air Liquide New Zealand
19 Maurice Road
Penrose, Auckland 1642
www.airliquide.co.nz



The world leader in gases, technologies and services for Industry and Health, Air Liquide is present in 80 countries with approximately 65,000 employees and serves more than 3 million customers and patients.